

ALUMINIUM PUMPS AND MOTORS **Z3 SERIES**

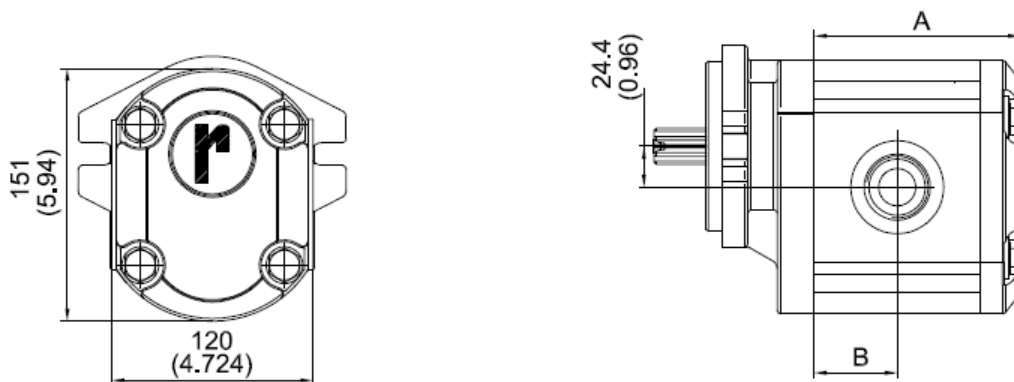
POMPE E MOTORI IN ALLUMINIO SERIE Z3

MADE IN ITALY



CARATTERISTICHE PRINCIPALI

MAIN CHARACTERISTICS



	20	25	30	35	40	45	50	55	60	64	70	80	90
CILINDRATA / CAPACITY cm ³ /giro at 1000 (giri/min)	19.9	24.9	29.9	34.3	40.5	45.2	49.9	54.5	60	63.9	70	78.7	89.6
PORTATA / DELIVERY L/min at 1500 (giri/min)	29.9	37.4	44.9	51.5	60.8	67.8	74.9	81.8	90	95.9	105	118	134.4
A (mm)	100.8	104	107.2	110	114	117	120	123	126.5	129	132.9	138.6	145.6
B (mm)	38.5	40	41.6	43	45	46.5	48	49.5	51	52.5	54.5	57.3	60.8

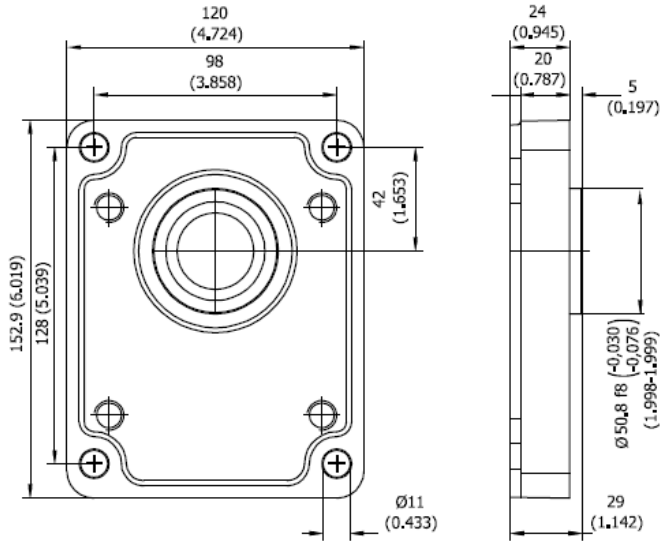
P1 Pressione max continua (bar) Max working pressure (bar)	280	280	280	280	250	250	230	230	200	200	170	170	160
P2 Pressione max di picco (bar) Max peak pressure (bar)	310	310	310	310	280	280	250	250	220	220	190	190	180
Velocità min per P1 (giri/min) Min speed for P1 pressure (Rpm)	450	450	350	350	350	350	350	350	350	350	350	350	350
Velocità max a vuoto (giri/min) Max speed without load (Rpm)	3000	3000	3000	3000	2700	2700	2200	2200	2000	2000	1800	1800	1800
Coppia resa (Nm) Output torque (Nm)	26.9	33.7	40.4	46.4	54.8	61.1	67.5	73.7	81.2	86.4	94.7	106.5	121.2
Massa (Kg) Weight (Kg)	10.6	10.8	11	11.2	11.4	11.5	11.7	11.9	12	12.2	12.4	12.7	13.1

VERIFICARE, ATTRAVERSO LE FORMULE SOTTO RIPORTATE, LA COMPATIBILITÀ TRA LE PRESTAZIONI DI PRESSIONE E PORTATA RICHIESTE, E LA CAPACITÀ DELL'ALBERO DI TRASCINAMENTO DI SOPPORTARE LA COPPIA RICHIESTA.

VERIFY THE COMPATIBILITY AMONG PERFORMANCE OF PRESSURE, FLOW REQUIRED AND TORQUE OF THE SHAFT THROUGH THE BELOW FORMULAS.

Per pompe o motori bidirezionali, diminuire la pressione del 15%.
With bidirectional pumps or motors, pressure is reduced by 15%.

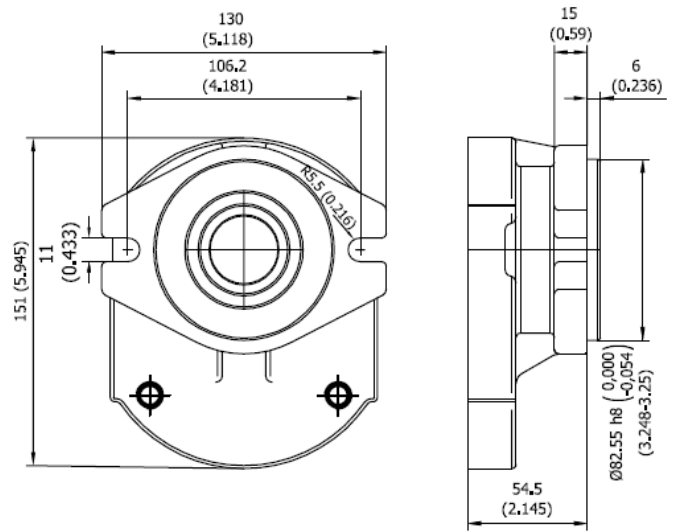
FLANGE
FLANGES



CODICE
CODE

A 0

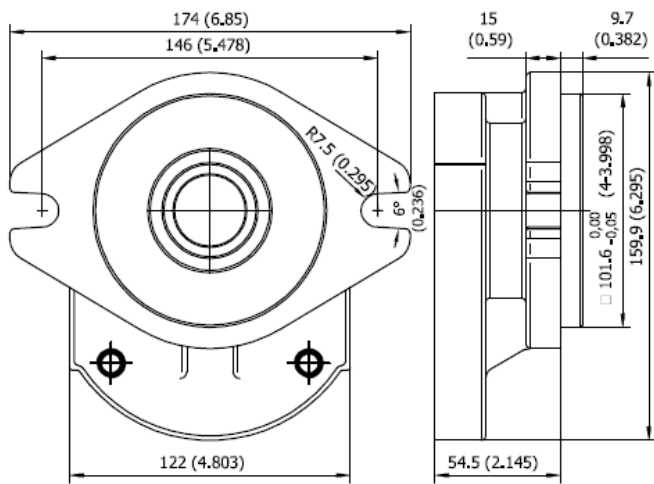
NOTA: Materiale Ghisa
NOTE: Material Cast iron



CODICE
CODE

B 2

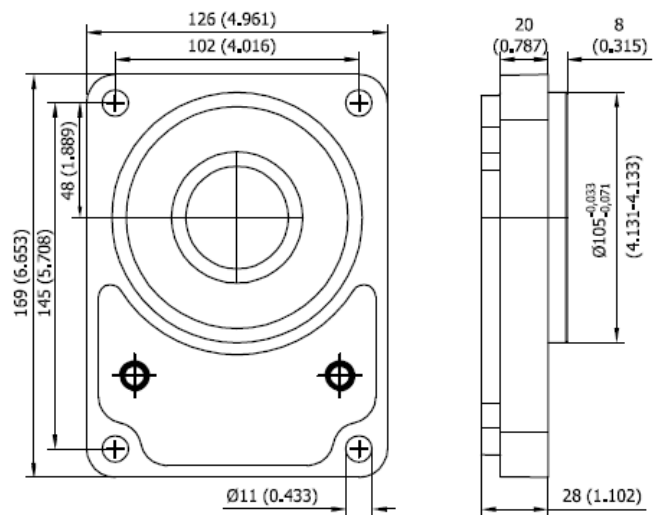
NOTA: Materiale Ghisa
NOTE: Material Cast iron



CODICE
CODE

B 3

NOTA: Materiale Ghisa
NOTE: Material Cast iron



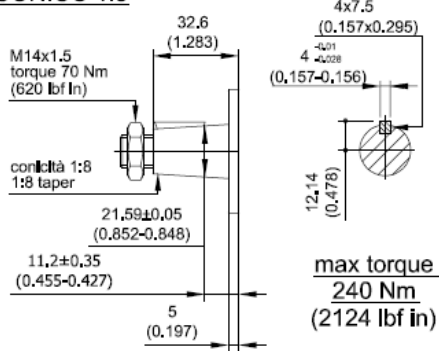
CODICE
CODE

C 4

NOTA: Materiale Ghisa
NOTE: Material Cast iron

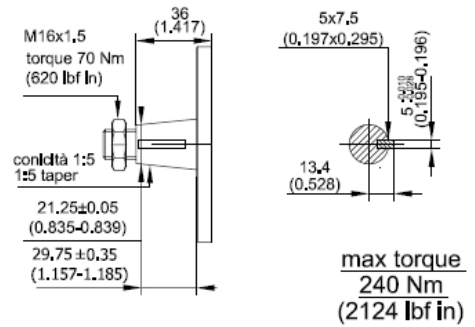
**ALBERI
SHAFTS**

CONICO 1:8



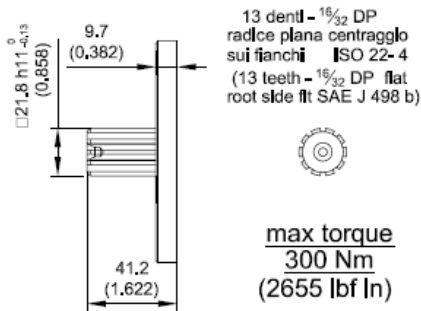
CODICE / CODE	C
PER FLANGIA / FOR FLANGE	A 0

CONICO 1:5



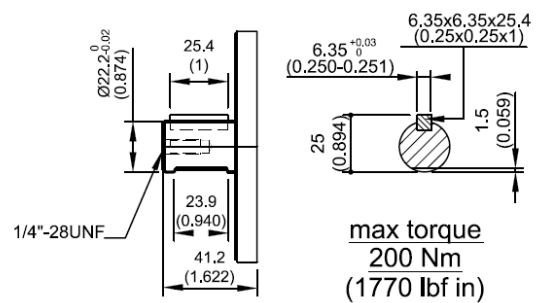
CODICE / CODE	A
PER FLANGIA / FOR FLANGE	C 4

SAE "B" SCANALATO



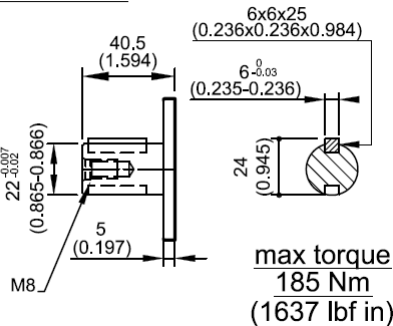
CODICE / CODE	B
PER FLANGIA / FOR FLANGE	B 2
	B 3

SAE "B" CILINDRICO 7/8"



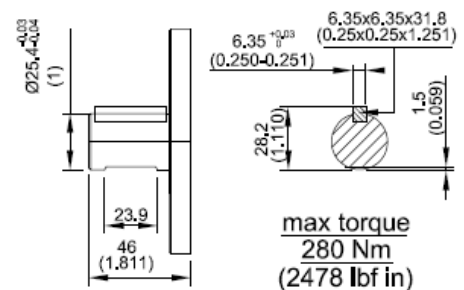
CODICE / CODE	L
PER FLANGIA / FOR FLANGE	B 2
	B 3

CILINDRICO



CODICE / CODE	Q
PER FLANGIA / FOR FLANGE	A 0
	D 5

SAE "B" CILINDRICO 1"



CODICE / CODE	M
PER FLANGIA / FOR FLANGE	B 2
	B 3

BOCCHIE DI ASPIRAZIONE E MANDATA INLET AND OUTLET PORTS

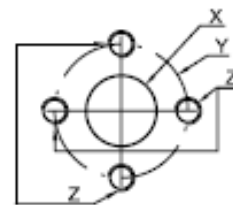
XX STANDARD

XX SU ORDINAZIONE / ON DEMAND

NON DISPONIBILI / NOT AVAILABLE

	X	Y	Z
A	19	40	M8 18
B	27	51	M10 18
C	33	62	M12 18

		OUT		
		A	B	C
IN	A	49		
	B	48	46	
	C		47	45



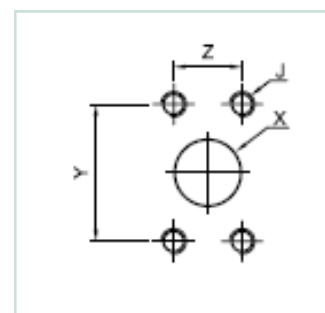
	X	Y	Z
A	20	40	M6 12
B	27	55	M8 18

		OUT	
		A	B
IN	A	50	
	B	51	52



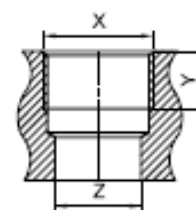
	X	Y	Z	J
A	12.5	38.1	17.5	5/16-18UNC-2B
B	19	47.6	22.2	3/8-16UNC-2B
C	25.4	52.4	26.2	
D	30.5	58.7	30.2	7/16-14UNC-2B
E	39.3	69.8	35.7	1/2-13UNC-2B
F	51	77.8	42.9	

		OUT					
		A	B	C	D	E	F
IN	A	53					
	B	54	55				
	C		56	57			
	D			58	59		
	E				60	61	
	F					62	63



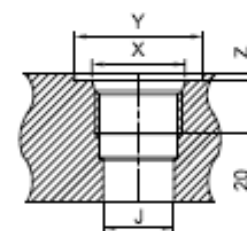
	X	Y	Z	DIMENSIONE NOMINALE
A	1" G	22	27	1
B	1" 1/4 G	22	33	1-1/4
C	1" 1/2 G	24	38	1-1/2

		OUT		
		A	B	C
IN	A	64		
	B	65	66	
	C		67	68



	DIMENSIONE NOMINALE	X	Y	Z	J
A	3/4"	1-1/16-12UN-2B	42	0.5	24.5
B	1"	1-5/16-12UN-2B	49	0.5	30.5
C	1"-1/4	15/8-12UN-2B	58	0.5	39
D	1"-1/2	1-7/8-12UN-2B	65	0.5	45

		OUT			
		A	B	C	D
IN	A	69			
	B	70	71		
	C		72	73	
	D			74	75



ISTRUZIONI PER ORDINARE UNITÁ SINGOLE Z3
HOW TO ORDER Z3 SINGLE UNITS

	1	2	3	4	5	6	7	8	9	10		
0	3	Z	A	G	35	C	0	48	S	-	1	B

1	TIPO UNITÁ / UNIT TYPE	CODICE / CODE
	POMPA / PUMP	Z
	MOTORE / MOTOR	ZM

2-5	FLANGIA / FLANGE (PAG. 9-10)	CODICE / CODE
	EUROPA / EUROPEAN	A - 0
	SAE "A" / SAE "A"	B - 2
	SAE "B" / SAE "B"	B - 3
	TEDESCA / GERMAN	C - 4
	EUROPEA GR. 3,5 / EUROPEA GR. 3,5	D - 5

3	CILINDRATA / CAPACITY cm^3	CODICE / CODE
	19.9	20
	24.9	25
	29.9	30
	34.5	35
	40.5	40
	45.2	45
	49.9	50
	54.5	55
	60	60
	63.9	64
	70	70
	78.7	80
	89.6	90

4	ALBERO / SHAFT (PAG. 11-12)	CODICE / CODE
	CONICO 1:8 / TAPERED 1:8	C
	CONICO 1:5 / TAPERED 1:5	A
	SAE "B" SCANALATO / SAE "B" SPLINED	B
	SAE "B" CIL. 7/8" / SAE "B" STRAIGHT 7/8"	L
	CILINDRICO Ø 22 / STRAIGHT Ø 22	Q
	SAE "B" CIL. 1" / SAE "B" STRAIGHT 1"	M
	CONICO GR. 3,5 / TAPERED GR. 3,5	R
	SAE 15 TH / SAE 15 TH	S

6	BOCCHIE / PORTS (PAG.13)	CODICE / CODE
	EUROPEE / EUROPEAN	49 - 48 - 46 - 47 - 45
	TEDESCHE / GERMAN	50 - 51 - 52
	BSPP	64 - 65 - 66 - 67 - 68
	O-RING BOSS	69 - 70 - 71 - 72 - 73 - 74 - 75
	SAE 3000 PSI	53 - 54 - 55 - 56 - 57 - 58 - 59 - 60 - 61 - 62 - 63

7	ROTAZIONE / ROTATION	CODICE / CODE
	DESTRO / RIGHT	D
	SINISTRO / LEFT	S
	BIDIREZIONALE DRENAGGIO INTERNO BIDIRECTIONAL WITH INTERNAL DRAIN	Y
	BIDIREZIONALE DRENAGGIO ESTERNO BIDIRECTIONAL WITH EXTERNAL DRAIN	R

8	TIPO UNITÁ / UNIT TYPE	CODICE / CODE
	PREDISPOSTA TANDEM / FOR TANDEM	T
	NORMALE / NORMAL	-

9	SUPPORTO INTEGRATO / INBOARD BEARINGS	CODICE / CODE
	TIPO 1 / TYPE 1	1
	NESSUNO / NORMAL	-

10	PARAOILIO / SHAFT SEAL (PAG.7)	CODICE / CODE
	STANDARD / STANDARD	N
	STANDARD FKM / STANDARD FKM	V
	STANDARD HNBR / STANDARD HNBR	H
	5 BAR NBR / 5 BAR NBR	R
	5 BAR FKM / 5 BAR FKM	RV
	5 BAR NBR / 5 BAR NBR	RH
	DOPPIO MIM NBR / DOUBLE SEAL NBR	N2
	DOPPIO MIM FKM / DOUBLE SEAL FKM	V2
	25 BAR PTFE NBR / 25 BAR PTFE NBR	B
	25 BAR NBR / 25 BAR NBR	BN
	25 BAR FKM / 25 BAR FKM	BV