



ALUMINIUM PUMPS AND MOTORS **Z2 SERIES**

POMPE E MOTORI IN ALLUMINIO SERIE Z2

MADE IN ITALY



CARATTERISTICHE PRINCIPALI

MAIN CHARACTERISTICS

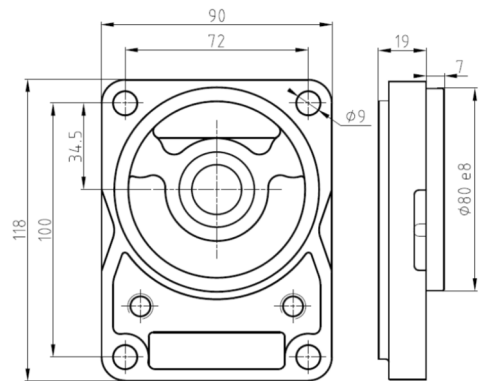
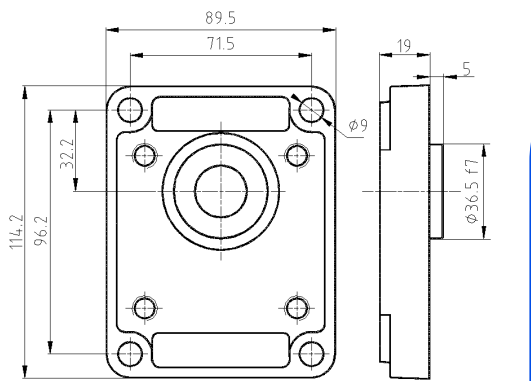
Tipo - Type		04	06	08	11	14	17	20	25	31
Cilindrata Capacity	Cm ³ / giro Cm ³ / rev	4.4	6.28	8.16	11.3	14.45	16.95	20.1	25.75	31.4
P1 Pressione max continua Max working pressure	Bar	300	300	300	300	300	270	230	180	160
P2 Pressione intermittente intermittent pressure	Bar	340	310	310	310	300	270	240	200	170
P3 Pressione max di picco Max peak pressure	Bar	360	360	360	360	360	330	290	230	200
Velocità max per pressione P1 Max speed for P1 pressure	Giri / min Rpm	4500	4500	3700	3300	2700	2500	2500	2500	2200
Velocità max a vuoto Max speed without load	Giri / min Rpm	5500	5500	4700	4000	3300	3000	3000	3000	2700
Velocità min. per pressione P1 Min speed for P1 pressure	Giri / min Rpm	1000	700	550	450	400	350	300	250	200

VERIFICARE, ATTRAVERSO LE FORMULE A PAGINA 4, LA COMPATIBILITÀ TRA LE PRESTAZIONI DI PRESSIONE E PORTATA RICHIESTE, E LA CAPACITÀ DELL'ALBERO DI TRASCINAMENTO DI SOPPORTARE LA COPPIA RICHIESTA.

VERIFY THE COMPATIBILITY AMONG PERFORMANCE OF PRESSURE, FLOW REQUIRED AND TORQUE OF THE SHAFT THROUGH THE FORMULAS ON PAGE 4.

Per pompe o motori bidirezionali, diminuire la pressione del 15%.
With bidirectional pumps or motors, pressure is reduced by 15%.

FLANGE
FLANGES



CODICE
CODE

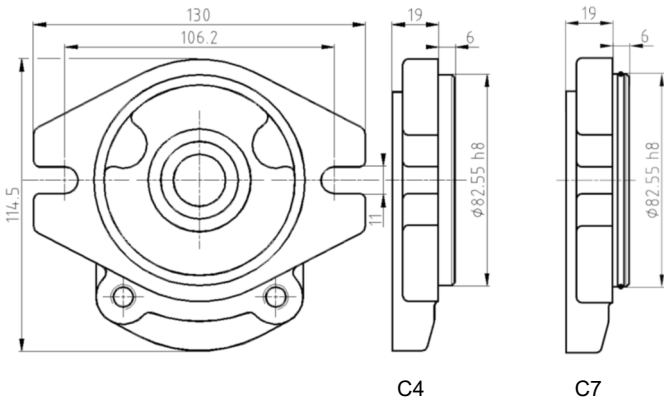
A 0

NOTA: Materiale Ghisa
NOTE: Material Cast iron

CODICE
CODE

B 1

NOTA: Materiale Ghisa
NOTE: Material Cast iron



C4

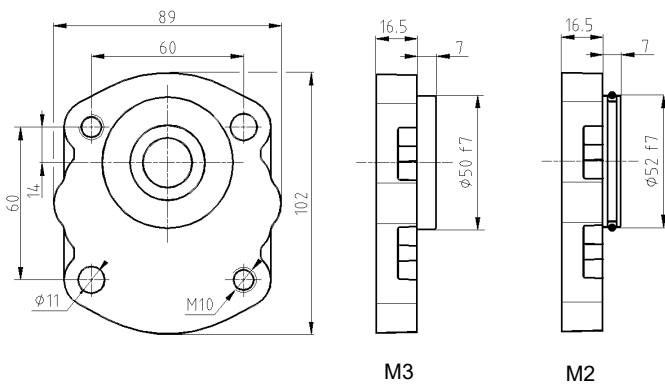
C7

CODICE
CODE

C 4

NOTA: Materiale Ghisa
NOTE: Material Cast iron

C 7



M3

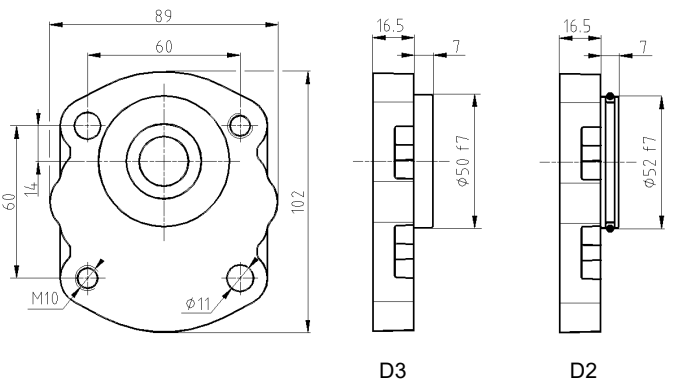
M2

CODICE
CODE

M 3

NOTA: Materiale Ghisa
NOTE: Material Cast iron

M 2



D3

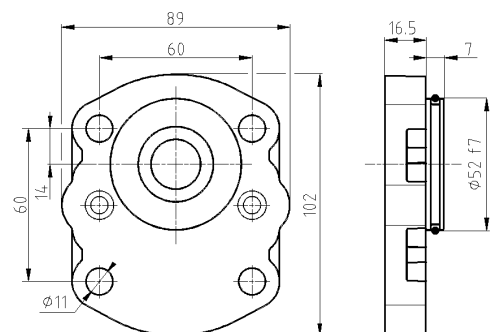
D2

CODICE
CODE

D 3

NOTA: Materiale Ghisa
NOTE: Material Cast iron

D 2

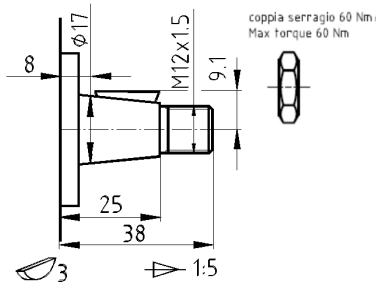


CODICE
CODE

E 2

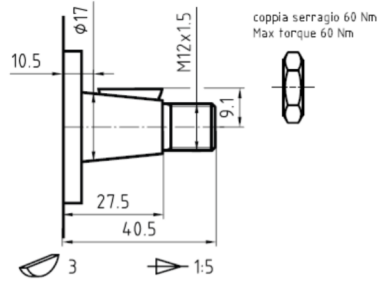
NOTA: Materiale Ghisa
NOTE: Material Cast iron

ALBERI
SHAFTS



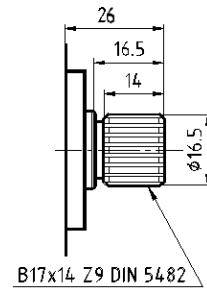
CODICE / CODE	A
PER FLANGIA / FOR FLANGE	B 1

Coppia max 140 Nm
Max torque 140 Nm



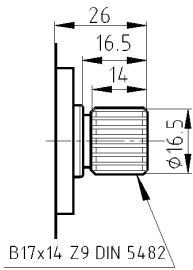
CODICE / CODE	A
PER FLANGIA / FOR FLANGE	D 3
	L 3
	M 3

Coppia max 140 Nm
Max torque 140 Nm



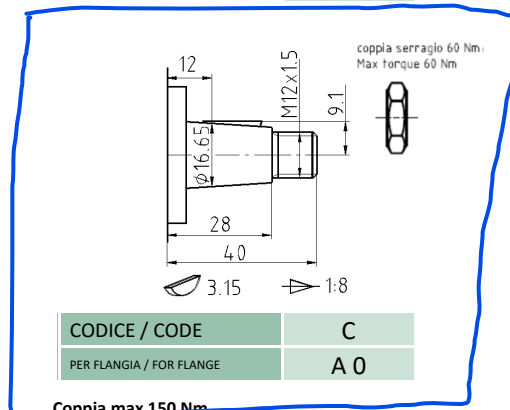
CODICE / CODE	B
PER FLANGIA / FOR FLANGE	B 1

Coppia max 110 Nm
Max torque 110 Nm



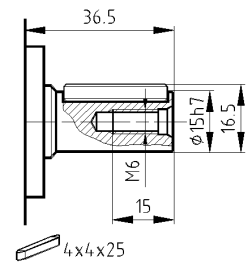
CODICE / CODE	B
PER FLANGIA / FOR FLANGE	D 3

Coppia max 110 Nm
Max torque 110 Nm



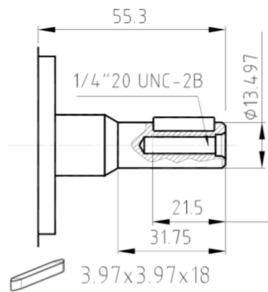
CODICE / CODE	C
PER FLANGIA / FOR FLANGE	A 0

Coppia max 150 Nm
Max torque 150 Nm



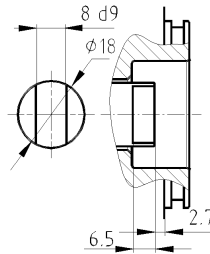
CODICE / CODE	E
PER FLANGIA / FOR FLANGE	A 0

Coppia max 70 Nm
Max torque 70 Nm



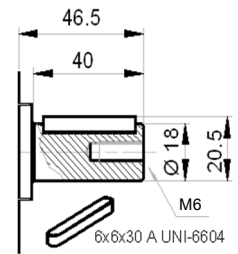
CODICE / CODE	H
PER FLANGIA / FOR FLANGE	C 4

Coppia max 60 Nm
Max torque 60 Nm



CODICE / CODE	F
PER FLANGIA / FOR FLANGE	E 2

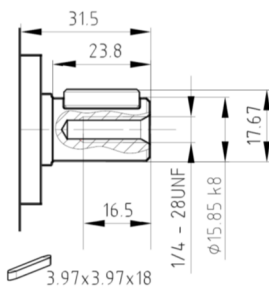
Coppia max 75 Nm
Max torque 75 Nm



SOLO CON SUPPORTI INTEGRATI TIPO 1
WITH OUTBOARD BEARING TYPE 1

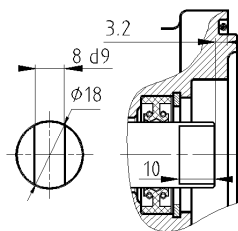
CODICE / CODE	G
PER FLANGIA / FOR FLANGE	A 0

Coppia max 85 Nm
Max torque 85 Nm



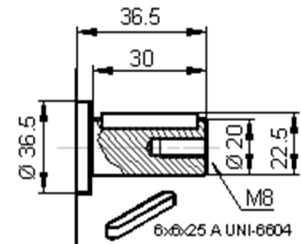
CODICE / CODE	L
PER FLANGIA / FOR FLANGE	C 4

Coppia max 75 Nm
Max torque 75 Nm



CODICE / CODE	M
PER FLANGIA / FOR FLANGE	F 5

Coppia max 75 Nm
Max torque 75 Nm



SOLO CON SUPPORTI INTEGRATI TIPO 1
WITH OUTBOARD BEARING TYPE 1

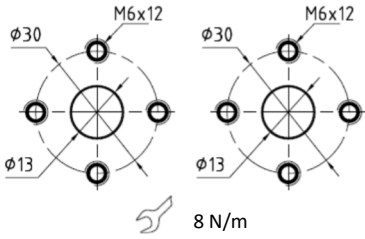
CODICE / CODE	I
PER FLANGIA / FOR FLANGE	A 0

Coppia max 100 Nm
Max torque 100 Nm

BOCCHIE DI ASPIRAZIONE E MANDATA LATERALI
SIDE INLET AND OUTLET PORTS

ASPIRAZIONE
INLET

MANDATA
OUTLET

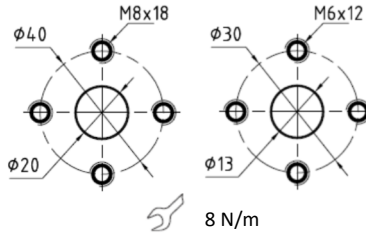


CODICE
CODE

32

ASPIRAZIONE
INLET

MANDATA
OUTLET

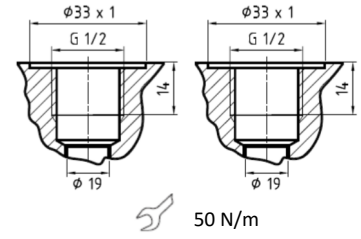


CODICE
CODE

33

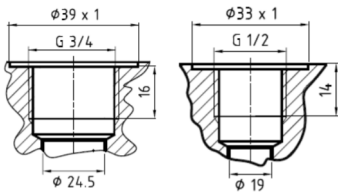
ASPIRAZIONE
INLET

MANDATA
OUTLET



CODICE
CODE

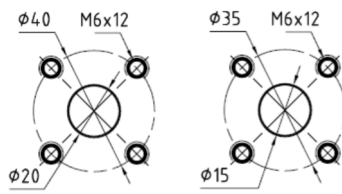
34



90 N/m - 50 N/m

CODICE
CODE

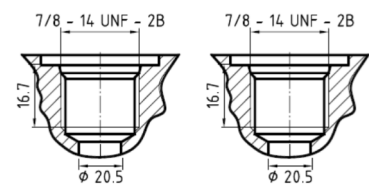
35



8 N/m

CODICE
CODE

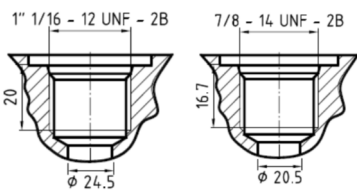
36



60 N/m

CODICE
CODE

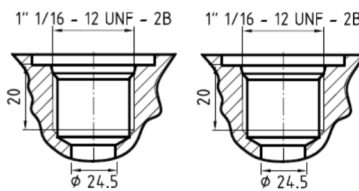
37



120 N/m - 70 N7m

CODICE
CODE

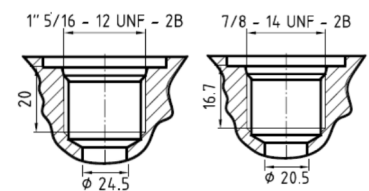
38



120 N/m

CODICE
CODE

39



120 N/m - 70 N7m

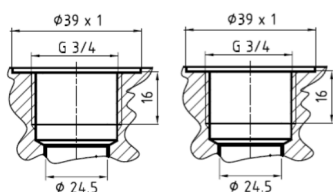
CODICE
CODE

40

BOCCHIE DI ASPIRAZIONE E MANDATA LATERALI

SIDE INLET AND OUTLET PORTS

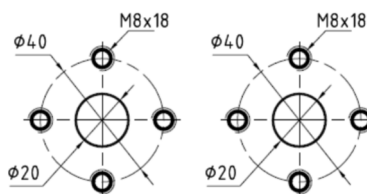
ASPIRAZIONE INLET	MANDATA OUTLET
----------------------	-------------------



90 N/m

CODICE CODE	41
----------------	----

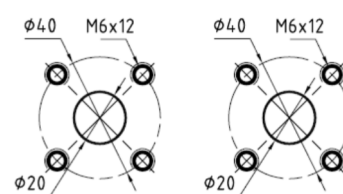
ASPIRAZIONE INLET	MANDATA OUTLET
----------------------	-------------------



8 N/m

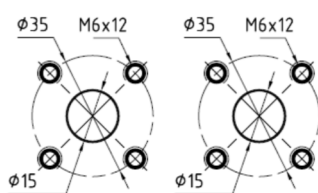
CODICE CODE	43
----------------	----

ASPIRAZIONE INLET	MANDATA OUTLET
----------------------	-------------------



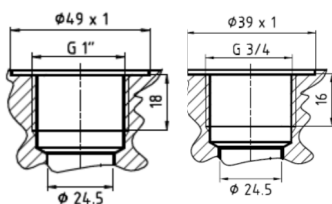
8 N/m

CODICE CODE	44
----------------	----



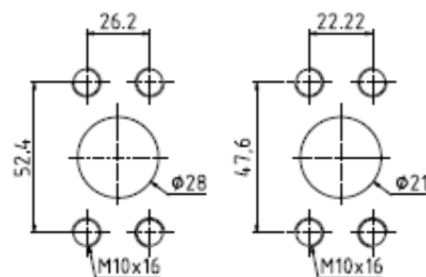
8 N/m

CODICE CODE	55
----------------	----



90 N/m

CODICE CODE	42
----------------	----



25 N/m

CODICE CODE	24
----------------	----

ISTRUZIONI PER L'ORDINAZIONE DI UNITÁ SINGOLE Z2
HOW TO ORDER Z2 SINGLE UNITS

	1	2	3	4	5	6	7	8	9	10	11	12		
0	2	Z	A	G	06	E	0	34	S	-	0	B	VRE	210

1	TIPO UNITÁ / UNIT TYPE	CODICE / CODE
	PUMP	Z
	MOTOR	ZM

2-5	FLANGIA / FLANGE (PAG. 9-10)	CODICE / CODE
	EUROPA / EUROPEAN	A - 0
	TEDESCA / GERMAN	B - 1
	AMERICANA / AMERICAN	C - 4 / C - 7
	TEDESCA / GERMAN	D - 3 / D - 2
	TEDESCA / GERMAN	M - 3 / M - 2
	TEDESCA / GERMAN	E - 2
	MOTORE ENDOTERMICO / PETROL ENGINE	K - 7
	TEDESCA / GERMAN	G - 3
	TEDESCA / GERMAN	L - 3
	EUROPEA CON DRENAGGIO / EUROPEAN WITH DRAIN	N - 4
	AMERICANA / AMERICAN	H - 6
	TEDESCA CON DRENAGGIO / GERMAN WITH DRAIN	P - 1

3	CILINDRATA / CAPACITY cm ³	CODICE / CODE
	4.4	04
	6.3	06
	8.15	08
	11.3	11
	14.5	14
	16.9	17
	20.1	20
	25.7	25
	31.4	31

4	ALBERO / SHAFT (PAG. 11-12)	CODICE / CODE
	CONICO 1:5 / TAPERED 1:5	A
	17 x 14 DIN 5482	B
	CONICO 1:8 / TAPERED 1:8	C
	CILINDRICO Ø 15 / STRAIGHT Ø 15	E
	CILINDRICO Ø 13 / STRAIGHT Ø 13	H
	PENNA / TONGUE Ø18 x 8	F
	CILINDRICO Ø18 / STRAIGHT Ø18	G
	CILINDRICO Ø 15.85 / STRAIGHT Ø 15.85	L
	PENNA / TONGUE Ø18 x 8	M
	CILINDRICO Ø 20 / STRAIGHT Ø 20	I
	CILINDRICO Ø 19 / STRAIGHT Ø 19	N
	ANSI 921 10TH 16/32 FLAT ROOT	W
	CILINDRICO Ø 22 / STRAIGHT Ø 22	Q
	CILINDRICO Ø 19x45 / STRAIGHT Ø 19x45	R
	CILINDRICO Ø 15.85x58,7 / STRAIGHT Ø 15.85x58,7	LA
	34 TEETH LEFT HAND HELICAL GEAR	J

	ANSI 921 13 TH 16/32 FLAT ROOT	T
	ANSI 921 9 TH 16/32 FLAT ROOT	U
	ANSI 921 11 TH 16/32 FLAT ROOT	K
	CILINDRICO Ø 22.22 / STRAIGHT Ø 22.22	V

6	BOCCHIE / PORTS (PAG.13)	CODICE / CODE
	EUROPEE / EUROPEAN	32 - 33 - 43
	TEDESCHE / GERMAN	36 - 44 - 55
	BSPP	34 - 35 - 41 - 42
	O-RING BOSS	37 - 38 - 39 - 40
	PORTE ANTERIORI-POSTERIORI / FRONT-REAR PORTS	49 - 50 - 51 - 52 - 53 - 54 - 56

7	ROTAZIONE / ROTATION	CODICE / CODE
	DESTRO / RIGHT	D
	SINISTRO / LEFT	S
	BIDIRECTIONAL WITH INTERNAL DRAIN	Y
	BIDIRECTIONAL WITH EXTERNAL DRAIN	R

8	TIPO UNITÁ / UNIT TYPE	CODICE / CODE
	PREDISPOSTA TANDEM / FOR TANDEM	T
	NIENTE / NONE	-

9	SUPPORTI / SUPPORT (PAG. 15-16)	CODICE / CODE
	SENZA / WITHOUT	0
	CUSCINETTO A DOPPIA CORONA DI SFERE	1
	DOPPIO CUSCINETTO A RULLI CONICI	2
	DOPPIO CUSCINETTO A RULLI CONICI	3

10	PARAOILIO / SHAFT SEAL (PAG. 7)	CODICE / CODE
	STANDARD / STANDARD	N
	STANDARD FKM / STANDARD FKM	V
	STANDARD HNBR / STANDARD HNBR	H
	5 BAR NBR / 5 BAR NBR	R
	5 BAR FKM / 5 BAR FKM	RV
	5 BAR HNBR / 5 BAR HNBR	RH
	DOPPIO MIM NBR / DOUBLE SEAL NBR	N2
	DOPPIO MIM FKM / DOUBLE SEAL FKM	V2
	25 BAR VARISEAL NBR / 25 BAR VARISEAL NBR	B
	25 BAR NBR / 25 BAR NBR	BN
	25 BAR FKM / 25 BAR FKM	BV

11	VALVOLA DI MASSIMA / RELIEF VALVE	CODICE / CODE
	SENZA / WITHOUT	-
	TARATURA REGOLABILE / ADJUST. CALIBRATION	VRE / VRI
	TARATURA FISSA / FIXED CALIBRATION	VFE / VFI

12	VALORI TARATURA VALVOLA	CODICE / CODE
	50 - 75 - 100 - 125 - 150 - 200 - 250 - 300 - 330	