



Modular Throttle and Check Valve

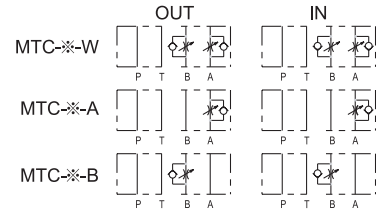
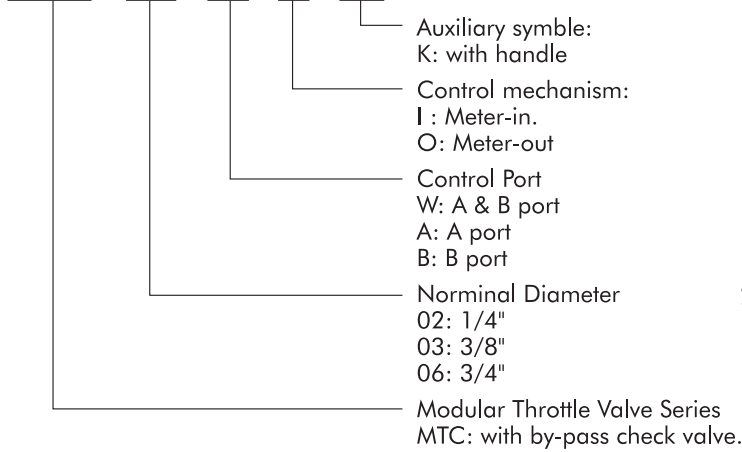
Features:

1. MTC series throttle valve is used to control the speed of actuator and for other flow control applications.
2. Wide range of control ports could be applied in different circuit.
3. Maximum working pressure 250 kgf/cm².



HOW TO ORDER

MTC - 02 - W - I - (K)



Handling:

1. To increasing the flow rate,turn the handle by counter clockwse direction. Oppsitley, to decreasing the flow,turn the handle by clockwise rotation.
2. When the working pressure is higher, it will be more difficult to turn on the handle by the resistance of pressure.Normally we suggest you to use spanner or other tools that fits the knob or bolt to turn it.

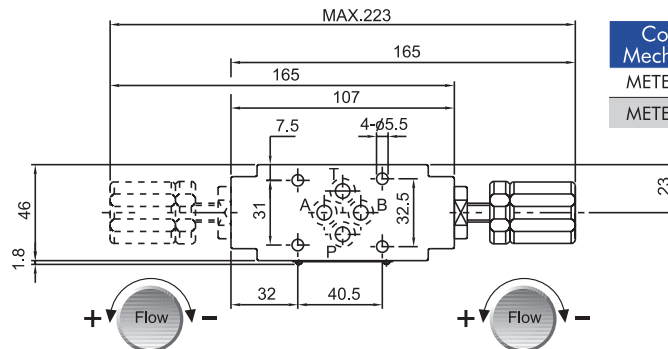
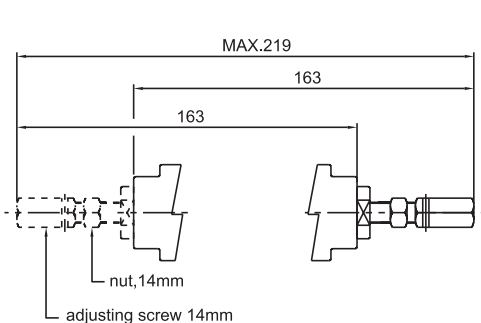
SPECIFICATIONS

Model No.	Maximum Working pressure kgf/cm ²	Maximum flow l/min	Cracking pressure kgf/cm ²	Weight kgs	Gasket surface Dimensions
MTC-02-A -B -W	250	50	0.5	1.3	ISO 4401-03-02-0-94
				1.3	
				1.5	
MTC-03-A -B -W	250	100	0.5	2.8	ISO 4401-05-04-0-94
				2.8	
				3.0	
MTC-06-A -B -W	250	180	0.5	13.0	ISO 4401-08-07-0-94
				13.0	
				13.5	

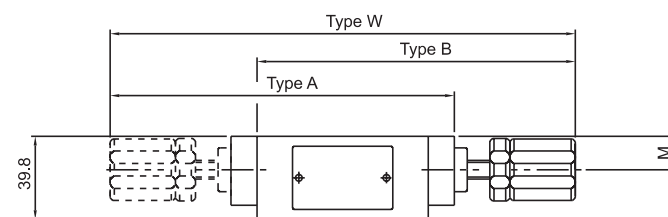
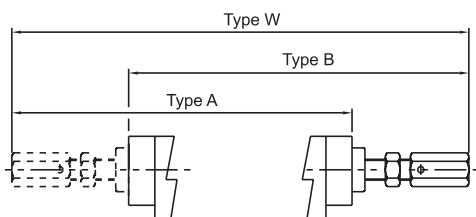
INSTALLATION DIMENSIONS:

UNIT: mm

MTC-02



Control Mechanism	M
METER IN	23.8
METER OUT	16



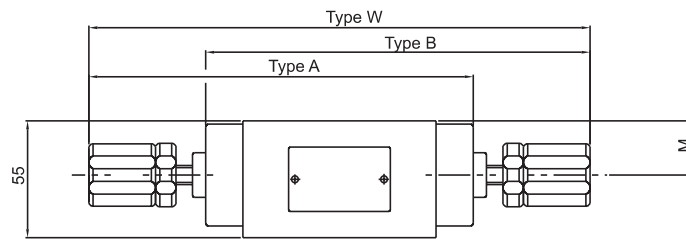
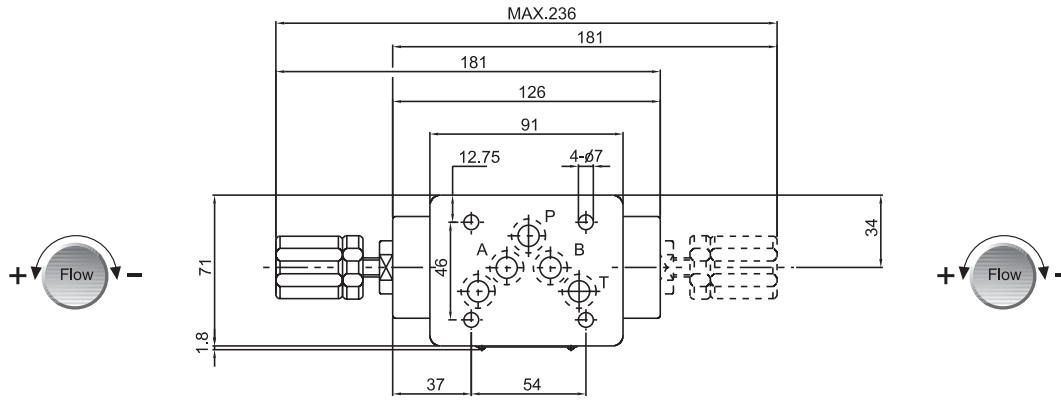


Modular Throttle and Check Valve

■ INSTALLATION DIMENSIONS:

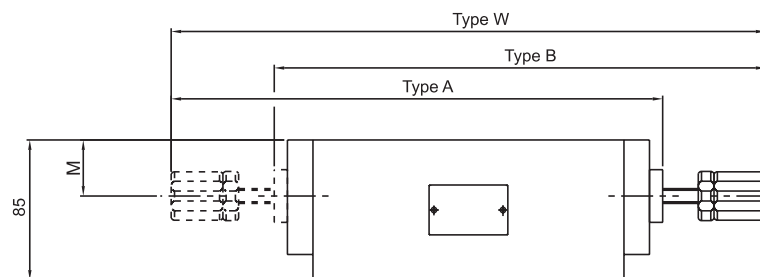
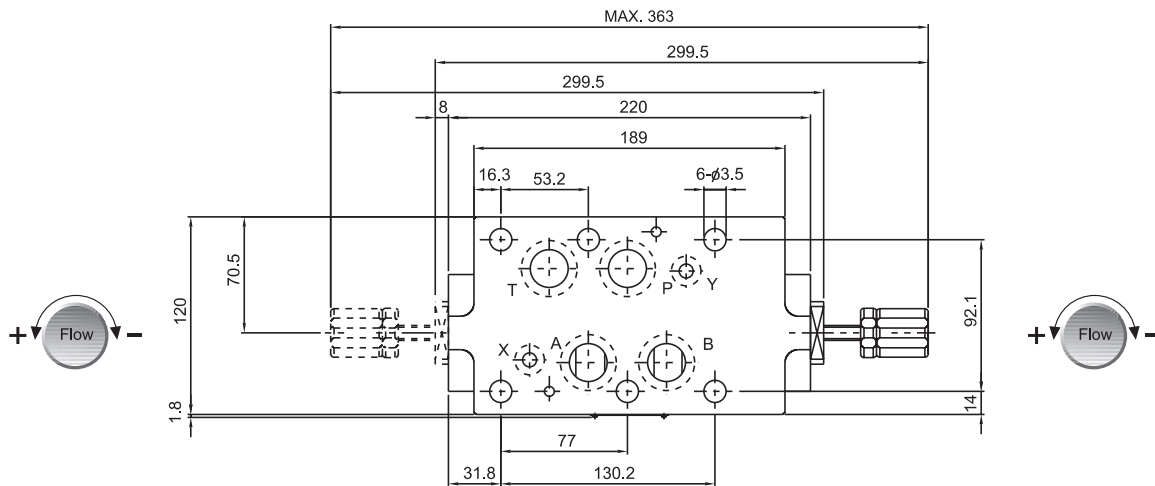
UNIT: mm

MTC-03-W. A. B



Control Mechanism	M
METER IN	29.8
METER OUT	25.5

MTC-06-W. A. B



Control Mechanism	M
METER IN	51
METER OUT	34