

## Designation & Ordering code

### COMPLETE FILTER

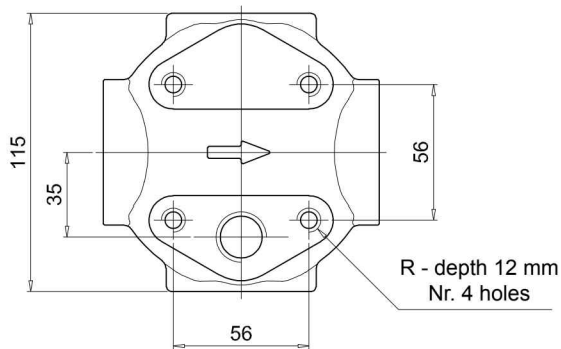
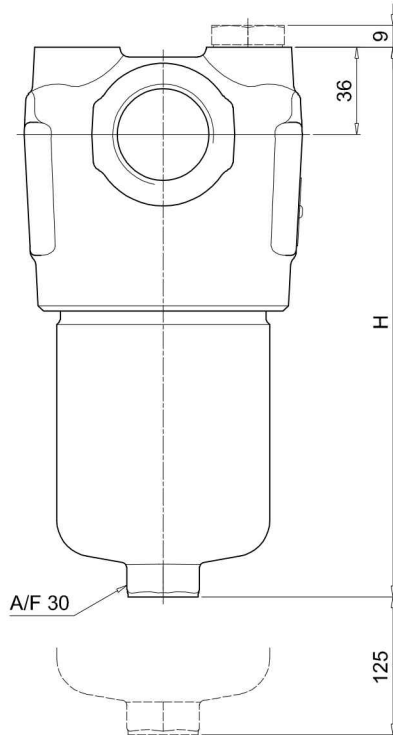
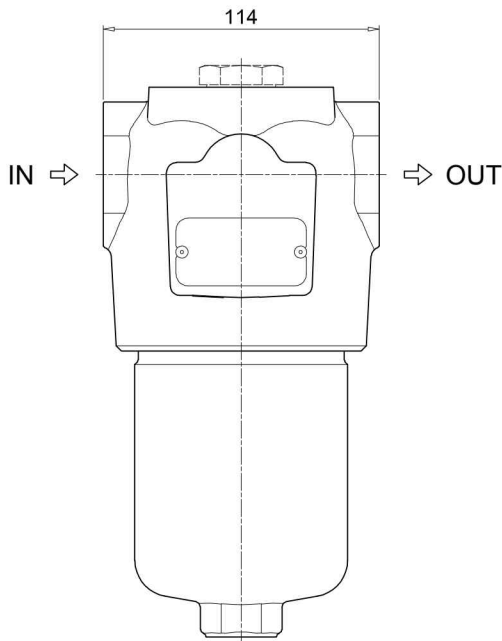
<b>Series and size</b>	Configuration example: <b>FMM150</b>   <b>2</b>   <b>B</b>   <b>A</b>   <b>D</b>   <b>2</b>   <b>M25</b>   <b>N</b>   <b>P01</b>															
<b>FMM150</b>																
<b>Length</b>	1   2   3															
<b>Valves</b>	S Without bypass B With bypass 6 bar															
<b>Seals</b>	A NBR V FPM															
<b>Connections</b>	C G 1" D G 1 1/4" E 1" NPT F 1 1/4" NPT G SAE 16 - 1 5/16" - 12 UN H SAE 20 - 1 5/8" - 12 UN															
<b>Connection for differential indicator</b>	1 Without connection 2 Upper connection 3 Frontal connection															
<b>Filtration rating (filter media)</b>	<table border="0"> <tr> <td><b>A03</b> Inorganic microfiber 3 µm</td> <td><b>A16</b> Inorganic microfiber 16 µm</td> </tr> <tr> <td><b>A06</b> Inorganic microfiber 6 µm</td> <td><b>A25</b> Inorganic microfiber 25 µm</td> </tr> <tr> <td><b>A10</b> Inorganic microfiber 10 µm</td> <td><b>M25</b> Wire mesh 25 µm</td> </tr> </table>										<b>A03</b> Inorganic microfiber 3 µm	<b>A16</b> Inorganic microfiber 16 µm	<b>A06</b> Inorganic microfiber 6 µm	<b>A25</b> Inorganic microfiber 25 µm	<b>A10</b> Inorganic microfiber 10 µm	<b>M25</b> Wire mesh 25 µm
<b>A03</b> Inorganic microfiber 3 µm	<b>A16</b> Inorganic microfiber 16 µm															
<b>A06</b> Inorganic microfiber 6 µm	<b>A25</b> Inorganic microfiber 25 µm															
<b>A10</b> Inorganic microfiber 10 µm	<b>M25</b> Wire mesh 25 µm															
	<b>Element Δp</b>					<b>Execution</b>										
	N 20 bar					P01 MP Filtri standard Pxx Customized										

### FILTER ELEMENT

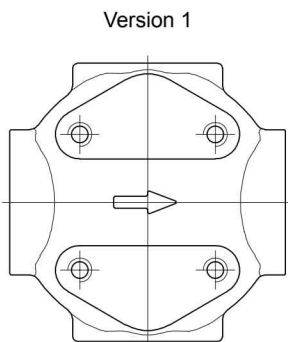
<b>Element series and size</b>	Configuration example: <b>HP150</b>   <b>2</b>   <b>M25</b>   <b>A</b>   <b>N</b>   <b>P01</b>													
<b>HP150</b>														
<b>Element length</b>	1   2   3													
<b>Filtration rating (filter media)</b>	<table border="0"> <tr> <td><b>A03</b> Inorganic microfiber 3 µm</td> <td><b>A16</b> Inorganic microfiber 16 µm</td> </tr> <tr> <td><b>A06</b> Inorganic microfiber 6 µm</td> <td><b>A25</b> Inorganic microfiber 25 µm</td> </tr> <tr> <td><b>A10</b> Inorganic microfiber 10 µm</td> <td><b>M25</b> Wire mesh 25 µm</td> </tr> </table>								<b>A03</b> Inorganic microfiber 3 µm	<b>A16</b> Inorganic microfiber 16 µm	<b>A06</b> Inorganic microfiber 6 µm	<b>A25</b> Inorganic microfiber 25 µm	<b>A10</b> Inorganic microfiber 10 µm	<b>M25</b> Wire mesh 25 µm
<b>A03</b> Inorganic microfiber 3 µm	<b>A16</b> Inorganic microfiber 16 µm													
<b>A06</b> Inorganic microfiber 6 µm	<b>A25</b> Inorganic microfiber 25 µm													
<b>A10</b> Inorganic microfiber 10 µm	<b>M25</b> Wire mesh 25 µm													
	<b>Seals</b>		<b>Element Δp</b>			<b>Execution</b>								
	A NBR V FPM		N 20 bar			P01 MP Filtri standard Pxx Customized								

### ACCESSORIES

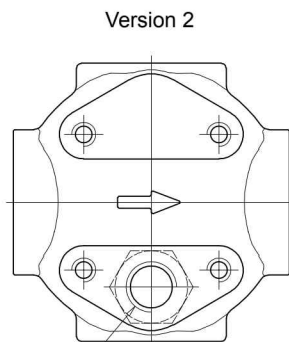
Differential indicators	page		page
<b>DEA</b> Electrical differential indicator	567	<b>DLE</b> Electrical / visual differential indicator	570
<b>DEH</b> Hazardous area electronic differential indicator	567-568	<b>DTA</b> Electronic differential indicator	571
<b>DEM</b> Electrical differential indicator	568-569	<b>DVA</b> Visual differential indicator	571
<b>DLA</b> Electrical / visual differential indicator	569-570	<b>DVM</b> Visual differential indicator	571
<b>Additional features</b>	page		
<b>T2</b> Plug	572		



FMM150	
Filter length	H [mm]
1	230
2	340
3	415
Connections	R
C-D	M10
E-F-G-H	3/8" UNC

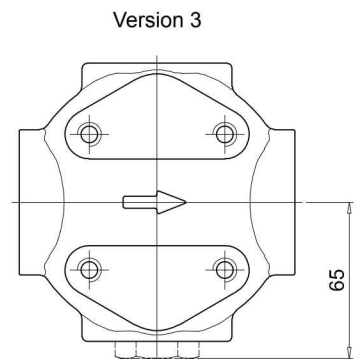


Version 1



Version 2

Connection for differential indicator  
T2 plug not included



Version 3

Connection for differential indicator  
T2 plug not included