



# Modular Pilot Operated Check Valve

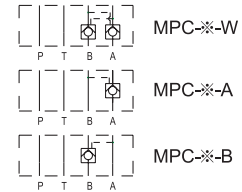
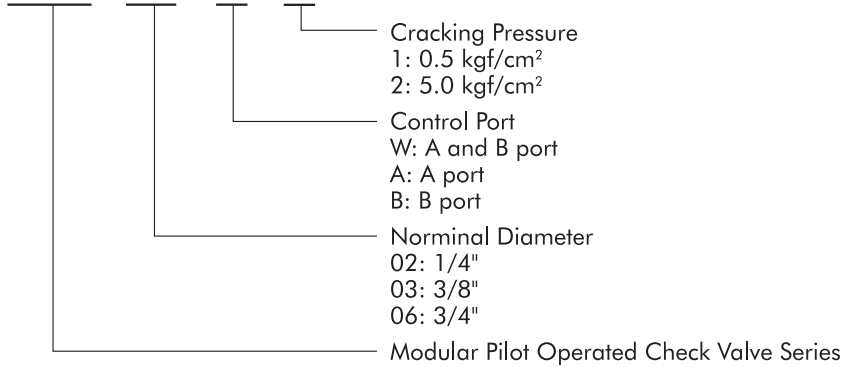
## Features:

1. Modular pilot check valve is used to prevent actuator self-running and to maintain actuator position.
2. Maximum working pressure is 250 kgf/cm<sup>2</sup>.



## HOW TO ORDER

### MPC - 02 - W - 1



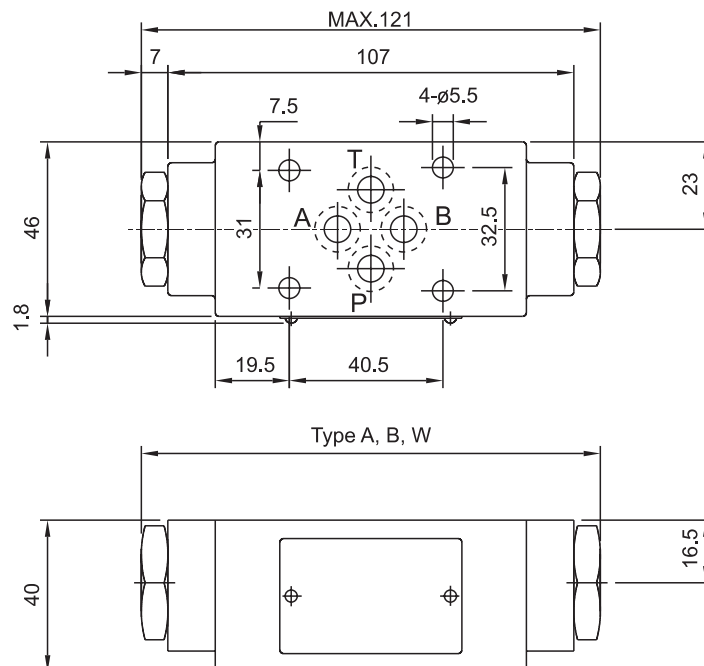
## SPECIFICATIONS

Model No.	Maximum Working pressure kgf/cm <sup>2</sup>	Maximum flow l/min	Cracking pressure kgf/cm <sup>2</sup>	Weight kgs	Gasket surface Dimensions
MPC-02-A -B -W	250	50	1: 0.5 2: 4.5	1.2	ISO 4401-03-02-0-94
MPC-03-A -B -W	250	100	1: 0.5 2: 4.5	3.0	ISO 4401-05-04-0-94
MPC-06-A -B -W	250	180	1: 0.5 2: 4.5	13.5	ISO 4401-08-07-0-94

## INSTALLATION DIMENSIONS:

UNIT: mm

MPC-02-W. A. B



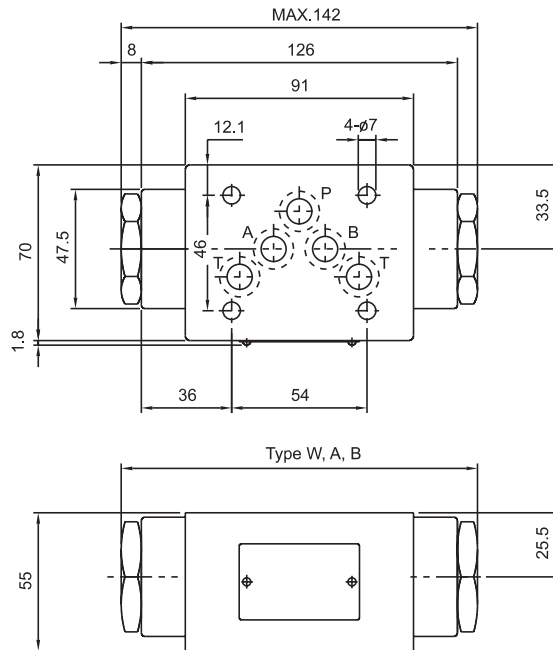


# Modular Pilot Operated Check Valve

## ■ INSTALLATION DIMENSIONS:

UNIT: mm

### MPC-03-W. A. B



### MPC-06

