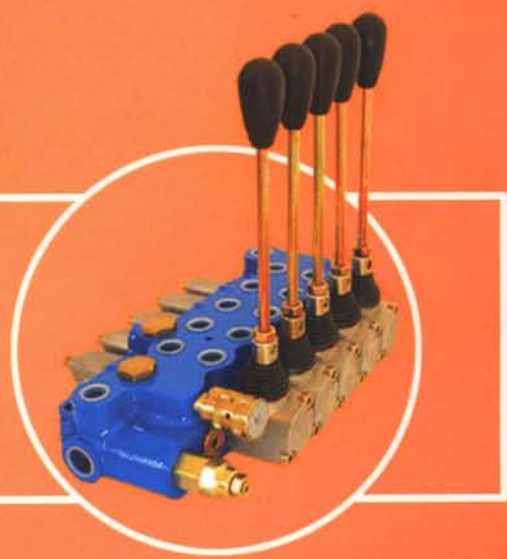
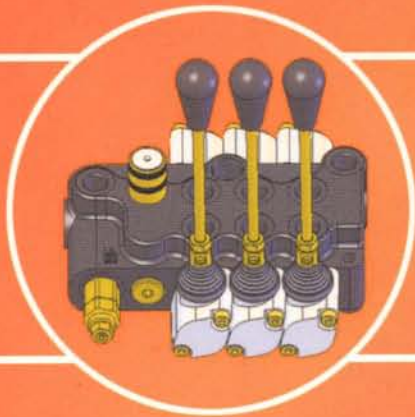
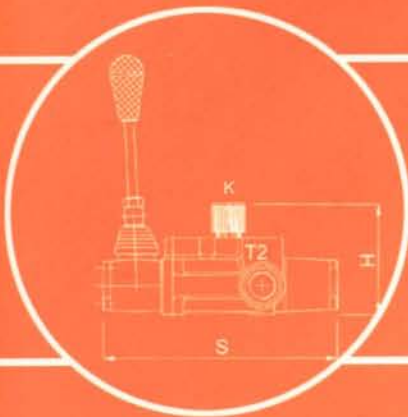


bb hydraulic



DIRECTIONAL CONTROL VALVES

BASEKO, s.r.o., Slovakia, Tel: 00421-(0)42-4485640, www.baseko.sk, e-mail: baseko@baseko.sk

ESEMPI DI DESIGNAZIONE - DESIGNATION SAMPLES

n.1

BM 20	3 GU	MO B2	MO A1	MO K16
TIPO DI DISTRIBUTORE	N. LEVE - NO. LEVERS	CIRCUITO - SPOOL TYPE	CIRCUITO - SPOOL TYPE	CIRCUITO - SPOOL TYPE
TYPE OF VALVE	FILETTATURA - THREAD	POSIZIONATORE - SPOOL CONTROL	POSIZIONATORE - SPOOL CONTROL	POSIZIONATORE - SPOOL CONTROL
TIPO VALVOLA DI MAX - RELIEF VALVE TYPE	AZIONAMENTO (MANUALE) - ACTUATION(MANUAL)	AZIONAMENTO (MANUALE) - ACTUATION(MANUAL)	AZIONAMENTO (MANUALE) - ACTUATION(MANUAL)	AZIONAMENTO (MANUALE) - ACTUATION(MANUAL)

n.2

BM 30	GK	DO	A6
TIPO DI DISTRIBUTORE	TIPO VALVOLA DI MAX - RELIEF VALVE TYPE	CIRCUITO - SPOOL TYPE	CIRCUITO - SPOOL TYPE
TYPE OF VALVE	AZIONAMENTO (CAMMA) - CAM OPERATOR	POSIZIONATORE - SPOOL CONTROL	POSIZIONATORE - SPOOL CONTROL
FILETTATURA - THREAD			

n.3

BC 40	3 12 VDC	GU	S	MO	A1	MSO	V	EO	AE 1E	RVPA-VLB	CF	MO	B2
TIPO DI DISTRIBUTORE	VOLTAGGIO SOLENOIDE - SOLENOID VOLTAGE	TIPO VALVOLA DI MAX - RELIEF VALVE TYPE	TIPO DI ELEMENTO - TYPE OF ELEMENT	CIRCUITO - SPOOL TYPE	MICROINTERRUTTORE - MICRO - SWITCH	TIPO DI ELEMENTO - TYPE OF ELEMENT	AZIONAMENTO (ELETTRICO) - ACTUATION (ELECTRIC)	CIRCUITO - SPOOL TYPE	VALVOLE AUSILIARE - AUXILIARY VALVES	TIPO DI ELEMENTO - TYPE OF ELEMENT	AZIONAMENTO (MANUALE) - ACTUATION(MANUAL)	CIRCUITO - SPOOL TYPE	POSIZIONATORE - SPOOL CONTROL
TYPE OF VALVE	N. LEVE - NO. LEVERS	FILETTATURA - THREAD	AZIONAMENTO (MANUALE) - ACTUATION(MANUAL)	POSIZIONATORE - SPOOL CONTROL	TIPO DI ELEMENTO - TYPE OF ELEMENT	AZIONAMENTO (ELETTRICO) - ACTUATION (ELECTRIC)	POSIZIONATORE - SPOOL CONTROL	POSIZIONATORE - SPOOL CONTROL	TIPO DI ELEMENTO - TYPE OF ELEMENT	AZIONAMENTO (MANUALE) - ACTUATION(MANUAL)	CIRCUITO - SPOOL TYPE	POSIZIONATORE - SPOOL CONTROL	POSIZIONATORE - SPOOL CONTROL

COD	CIRCUITO <i>SPOOL TYPE</i>	BM 10	BM 20	BM 30	BM 70	BM 150
			BF 20 BC 20	BM 40 BF 40 BC 40	BF 70 BC 70	BC 150
A		●	●	●	●	●
B		●	●	●	●	●
C		●	●	●	●	●
D		●	●	●	●	●
E		●	●	●	●	●
F		●	●	●	●	●
K		●	●	●	●	●
L	 <i>PTUs - Switzy</i>	●	●	●	●	●
M		●	●	●	●	●
R		●	●	●	●	●
Y		●	●	●	●	●
Z		●	●	●	●	●
AE		●	●	●	●	●
BE		●	●	●	●	●
DE		●	●	●	●	●

12		12 VOLT DC	●	●	●	●	●
24		24 VOLT DC	●	●	●	●	●

COD	VALVOLA MAX RELIEF VALVE	CAMPO DI TARATURA CALIBRATION FIELD bar (psi)	TARATURA STANDARD STANDARD CALIBRATION bar (psi)	BM 10	BM 20	BM 30	BM 70	BM 150
					BF 20 BC 20	BM 40 BF 40 BC 40	BF 70 BC 70	BC 150
X		10 - 90 (145-1305)	70 (1015)	●	●	●	●	●
U		90 - 250 (1305-3626)	140 (2030)	●	●	●	●	●
K		150 - 300 (2175-4351)	200 (2900)	●	●	●	●	●

COD	POSIZIONATORE <i>SPOOL CONTROL</i>	BM 10	BM 20	BM 30	BM 70	BM 150
			BF 20 BC 20	BM 40 BF 40 BC 40	BF 70 BC 70	BC 150
1		●	●	●	●	●
2		●	●	●	●	●
3		●	●	●	●	●
4		●	●	●	●	●
5		●	●	●	●	●
6		●	●	●	●	●
7		●	●	●	●	●
8		●	●	●	●	●
9		●	●	●	●	●
10		●	●	●	●	●
11		●	●	●	●	●
12		●	●	●	●	●
13		●	●	●	●	●
14		●	●	●	●	●
16		●	●	●	●	●
1E		●	●	●	●	●
1EA		●	●	●	●	●
1EB		●	●	●	●	●

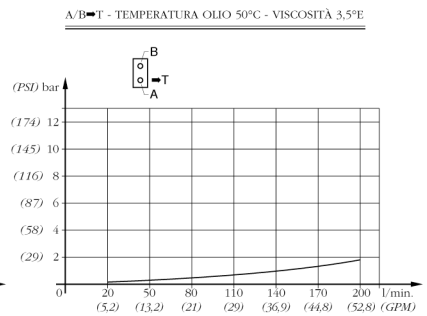
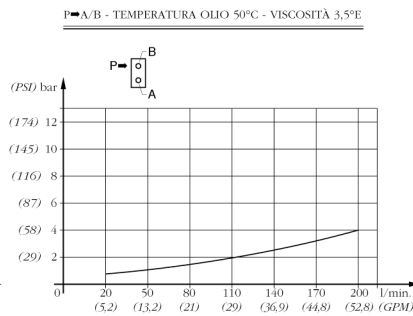
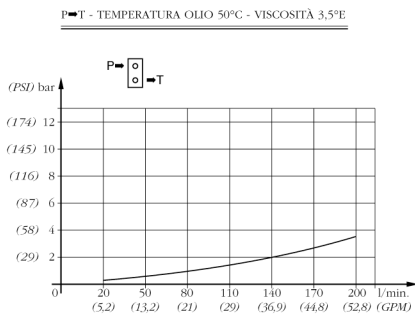
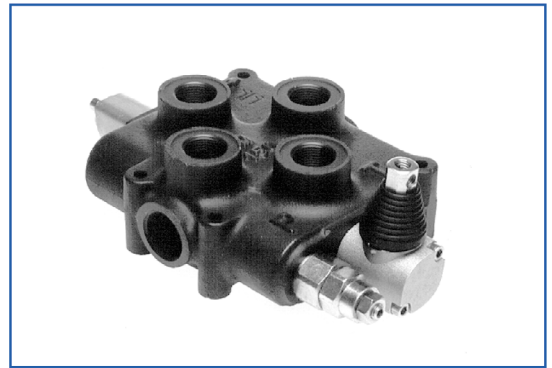
COD	FILETTATURE STANDARD <i>STANDARD THREADS</i>	BM 10	BM 20	BM 30	BM 70	BM 150
			BF 20 BC 20	BM 40 BF 40 BC 40	BF 70 BC 70	BC 150
G	BSP GAS	●	●	●	●	●
F	LINE SAFE O-RING PORTS	●	●	●	●	●

TARATURA STANDARD EFFETTUATA CON POMPA 5 LT/MIN.
STANDARD CALIBRATION MADE WITH A 5 LT/MIN. PUMP



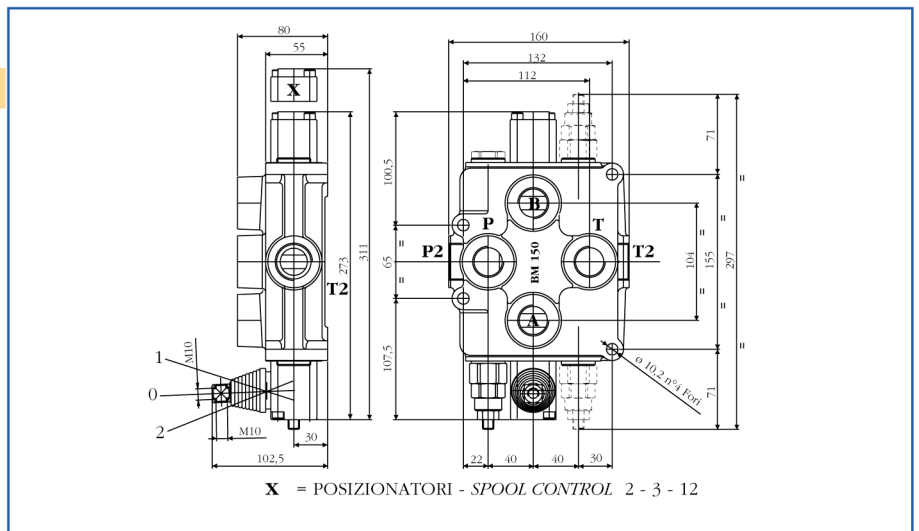
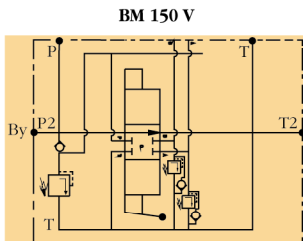
CARATTERISTICHE TECNICHE • TECHNICAL CHARACTERISTICS

	I/min	GPM
PORTATA NOMINALE • NOMINAL FLOW	140	37
PORTATA LIMITE • MAX FLOW	180	48
	bar	PSI
PRESSIONE NOMINALE • NOMINAL PRESSURE	250	3600
PRESSIONE MAX SUGLI UTILIZZI • MAX PRESSURE ON PORTS	320	4700
CONTOPRESSIONE MAX ALLO SCARICO • MAX PRESSURE IN TANK-LINE ..	80	1100



POSSIBILITÀ DI VALVOLE AUSILIARIE (VEDI SCHEMA)
 POSSIBILITY TO HAVE AUXILIARY VALVES (SEE DIAGRAM)

- VL = LIMITATRICI DI PRESSIONE
VL = RELIEF VALVE
- VC = ANTICAVIAZIONE
VC = ANTI-CAVITATION VALVE
- VLC = LIMITATRICE E ANTICAVIAZIONE
VLC = COMBINED RELIEF AND ANTI-CAVITATION



MOD	L	I	Kg
BM 150/1			8,2

FILETTATURE STANDARD - STANDARD THREADS							
COD	A - B	P	T	P ₂	T ₂	P ₃	T ₃
G	3/4"	3/4"	3/4"	1"	1"		
F	1.1/16"-12	1.1/16"-12	1.1/16"-12	1.5/16"-12	1.5/16"-12		

SU RICHIESTA FILETTATURE DIVERSE - OTHER THREADS AVAILABLE ON REQUEST

