

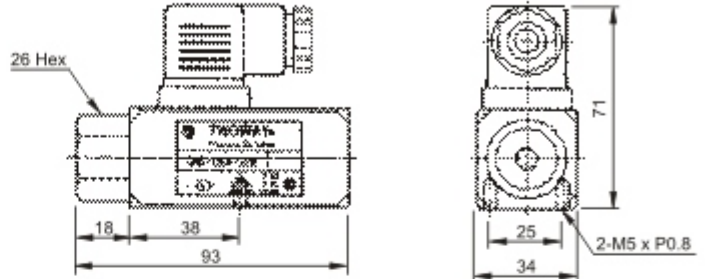


DNB Series Pressure Switches

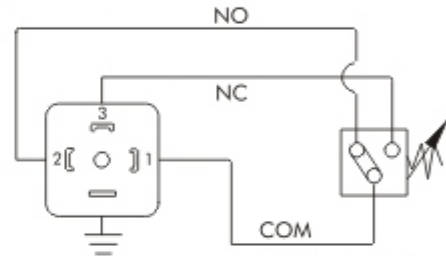


DIMENSIONS:

UNIT: mm



WIRING DIAGRAM:



NC: clamp 1-2
NO: clamp 1-3

Breaking capacity	AC	DC
Voltage up to	125, 250	125, 250
Resistance load	5	0.5, 0.25

Features:

1. General type, pressure adjusting by hex key wrench.
2. Service life time upto 100,000 times.
3. Pipe connection port, 3 types of threading for choosen.
4. Weight: 0.6 kg.

HOW TO ORDER

DNB - 100K - 22B

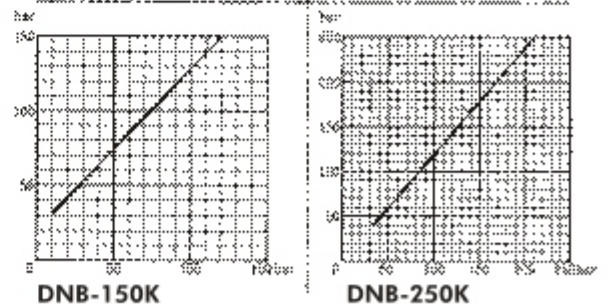
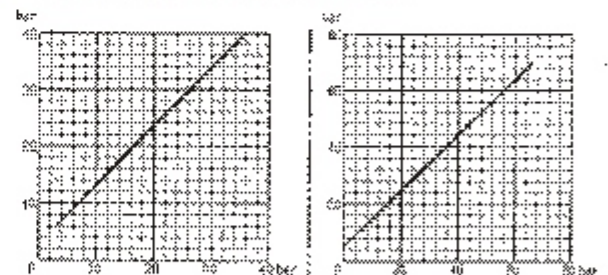
Design no.:
22B: 1/4" PT
22B80: 1/4" PF(G)
22B90: 1/4" NPT

Pressure adjusting range:

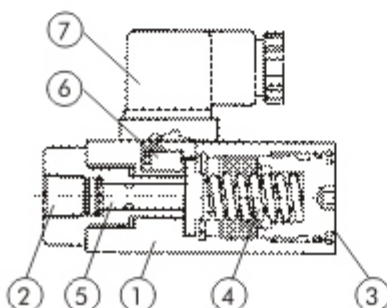
Model No.	Adj Range Bar	Surge pressure
40K	5~40	150
70K	6~70	200
150K	30~150	300
250K	40~250	400

Series no.
DNB: General Type
Pressure Switch.

PERFORMANCE CURVES:



SCHEMATIC CROSS-SECTION



1	Body(Casting Iron)	5	Servo Piston
2	Connecting port	6	Micro Switch
3	Pressure Adj. Konb.	7	Wiring connector
4	Spring		