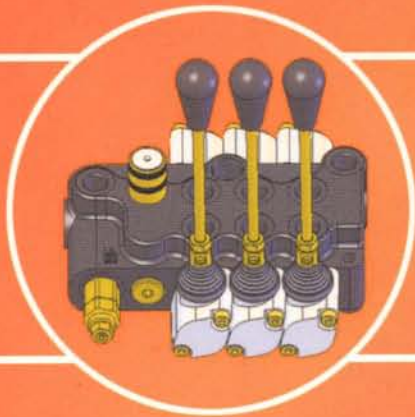
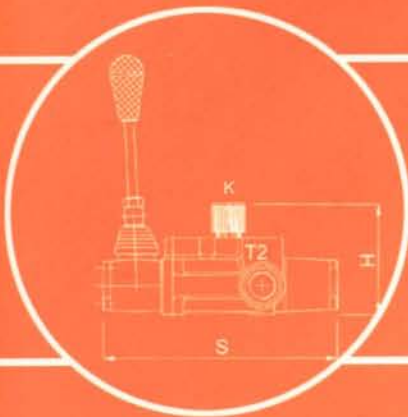


bb hydraulic



DIRECTIONAL CONTROL VALVES

BASEKO, s.r.o., Slovakia, Tel: 00421-(0)42-4485640, www.baseko.sk, e-mail: baseko@baseko.sk

COD	CIRCUITO SPOOL TYPE	BM 10	BM 20	BM 30	BM 70	BM 150
			BF 20 BC 20	BM 40 BF 40 BC 40	BF 70 BC 70	BC 150
A		●	●	●	●	●
B		●	●	●	●	●
C		●	●	●	●	●
D		●	●	●	●	●
E		●	●	●	●	●
F		●	●	●	●	●
K		●	●	●	●	●
L	 <i>PTUs - Switzy</i>	●	●	●	●	●
M		●	●	●	●	●
R		●	●	●	●	●
Y		●	●	●	●	●
Z		●	●	●	●	●
AE		●	●	●	●	●
BE		●	●	●	●	●
DE		●	●	●	●	●

12		12 VOLT DC	●	●	●	●
24		24 VOLT DC	●	●	●	●

COD	VALVOLA MAX RELIEF VALVE	CAMPO DI TARATURA CALIBRATION FIELD bar (psi)	TARATURA STANDARD STANDARD CALIBRATION bar (psi)	BM 10	BM 20	BM 30	BM 70	BM 150
					BF 20 BC 20	BM 40 BF 40 BC 40	BF 70 BC 70	BC 150
X		10 - 90 (145-1305)	70 (1015)	●	●	●	●	●
U		90 - 250 (1305-3626)	140 (2030)	●	●	●	●	●
K		150 - 300 (2175-4351)	200 (2900)	●	●	●	●	●

COD	POSIZIONATORE SPOOL CONTROL	BM 10	BM 20	BM 30	BM 70	BM 150
			BF 20 BC 20	BM 40 BF 40 BC 40	BF 70 BC 70	BC 150
1		●	●	●	●	●
2		●	●	●	●	●
3		●	●	●	●	●
4		●	●	●	●	●
5		●	●	●	●	●
6		●	●	●	●	●
7		●	●	●	●	●
8		●	●	●	●	●
9		●	●	●	●	●
10		●	●	●	●	●
11		●	●	●	●	●
12		●	●	●	●	●
13		●	●	●	●	●
14		●	●	●	●	●
16		●	●	●	●	●
1E		●	●	●	●	●
1EA		●	●	●	●	●
1EB		●	●	●	●	●

COD	FILETTATURE STANDARD STANDARD THREADS	BM 10	BM 20	BM 30	BM 70	BM 150
			BF 20 BC 20	BM 40 BF 40 BC 40	BF 70 BC 70	BC 150
G	BSP GAS	●	●	●	●	●
F	LINE SAFE O-RING PORTS	●	●	●	●	●

TARATURA STANDARD EFFETTUATA CON POMPA 5 LT/MIN.
STANDARD CALIBRATION MADE WITH A 5 LT/MIN. PUMP



CARATTERISTICHE TECNICHE • TECHNICAL CHARACTERISTICS

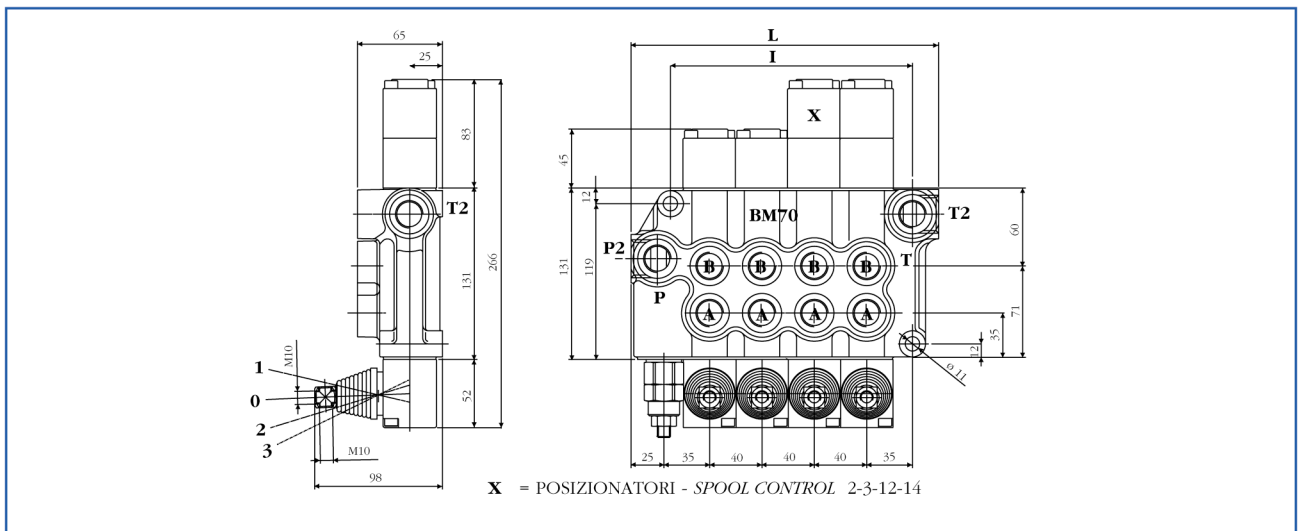
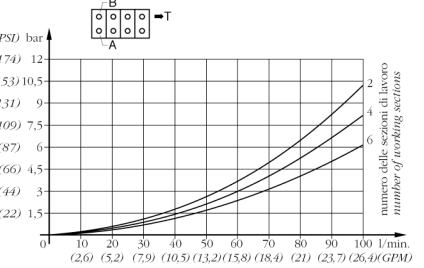
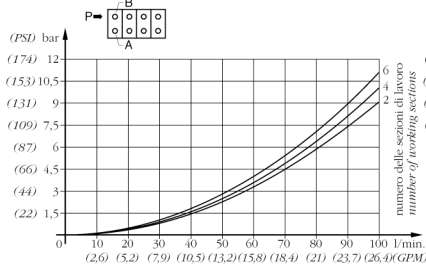
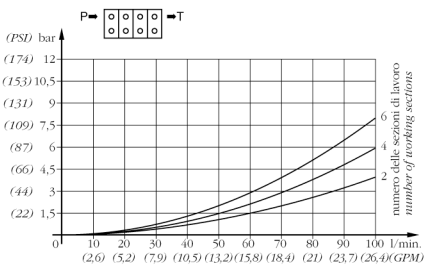
	I/min	GPM
PORTATA NOMINALE • <i>NOMINAL FLOW</i>	65	17
PORTATA LIMITE • <i>MAX FLOW</i>	90	24
	bar	PSI
PRESSIONE NOMINALE • <i>NOMINAL PRESSURE</i>	250	3600
PRESSIONE NOMINALE EO • <i>NOMINAL PRESSURE EO</i>	180	2600
PRESSIONE MAX SUGLI UTILIZZI • <i>MAX PRESSURE ON PORTS</i>	320	4700
PRESSIONE MAX SUGLI UTILIZZI EO • <i>MAX PRESSURE ON PORTS EO</i>	250	3600
CONTROPRESSIONE MAX ALLO SCARICO • <i>MAX PRESSURE IN TANK-LINE</i> ..	80	1100



P=T - TEMPERATURA OLIO 50°C - VISCOSITÀ 3,5°E

P=A/B - TEMPERATURA OLIO 50°C - VISCOSITÀ 3,5°E

A/B=T - TEMPERATURA OLIO 50°C - VISCOSITÀ 3,5°E



MOD	L	I	Kg
BM 70/1	117	66	4.6
BM 70/2	157	106	7
BM 70/3	197	146	9.2
BM 70/4	237	186	11.5
BM 70/5	277	226	13.7
BM 70/6	317	266	16

FILETTATURE STANDARD - STANDARD THREADS							
COD	A - B	P	T	P ₂	T ₂	P ₃	T ₃
G	1/2"	1/2"	1/2"	3/4"	3/4"		
F	7/8"-14	7/8"-14	7/8"-14	1.1/16"-12	1.1/16"-12		

SU RICHIESTA FILETTATURE DIVERSE - OTHER THREADS AVAILABLE ON REQUEST

